



RENO

GRIT
MOVE BEYOND

April Wolfe, CTRS and Tish Scolnik

Living Life Off Pavement:
Adaptive Equipment for Trail Exploration

Agenda

- About us
- Why adaptive recreation?
- Types of equipment
- ADA + trail access
- Funding sources
- Program Examples



Learning Outcomes

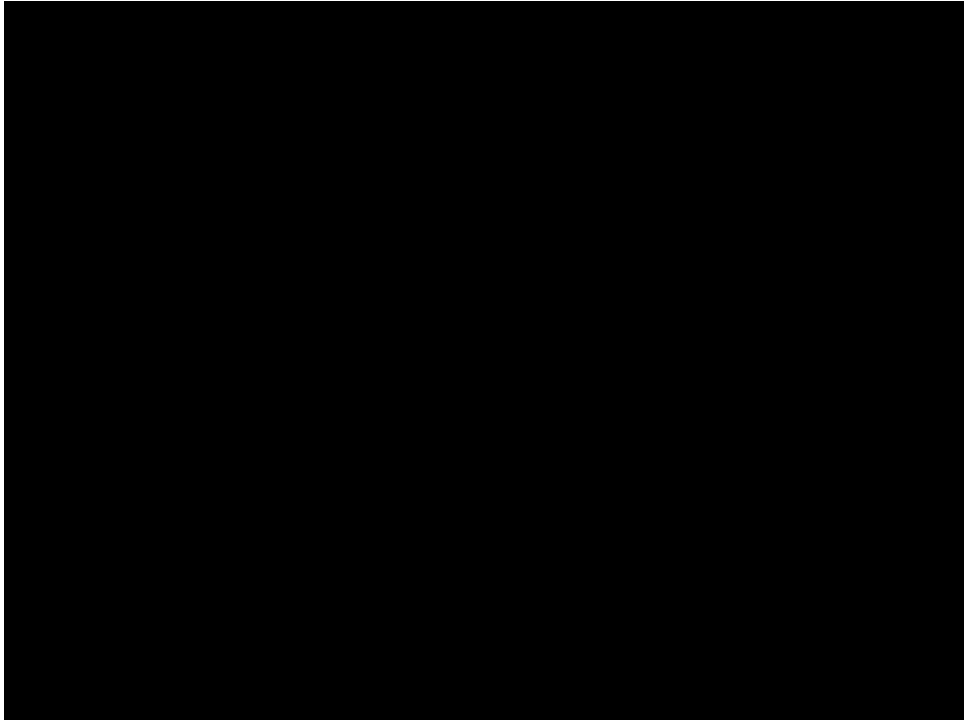
1. Attendees will learn a minimum of 3 different adaptive equipment options
2. Attendees will learn the rights under the ADA for trail access
3. Attendees will learn possible funding sources to purchase adaptive equipment





About April and City of Reno Adaptive







About Tish and GRIT







A person wearing a green jacket, a black helmet, and sunglasses is riding a specialized adaptive mountain bike. The bike has a large front wheel and a smaller rear wheel. The rider is positioned on a dirt trail in a forest with many trees and fallen branches. The text "Why Adaptive Recreation?" is overlaid on the image in white, with a blue underline under the word "Adaptive".

Why Adaptive Recreation?



“It has opened up countless doors. I’m more visible in my community with this chair. I can actually talk to people and meet people and go out and do things.
-Tyler Rich

Rights Under the ADA

1. Right to the Most Integrated Setting
2. Right to Participate
3. Right to Reasonable Accommodations





Types of Equipment

GRIT Freedom Chair

- Easy to push
- Built for the trail
- Take it anywhere
- Designed for affordability and ease of maintenance
- Range of sizes, including kids





I

N T R O D U C I N G

What Our Riders Are Saying



"Scott has been hiking with us for the first time ever. We always had to leave him behind and now he joins us.

We are forever grateful to GRIT. . . you have given us back our family time." -**Jackie, wife of Scott Hinton**



Other Off-Road Wheelchairs

- FreeWheel Attachment
- Hippocampe Beach Wheelchair
- Freedom Trax
- Action Track Chair
- Batac/FireFly (power wheelchair attachment)
- Many Other Options...



The High Fives Trail at Sky Tavern is built for...

Off-Road Uprights/Recumbents

- E-Bikes!!!
- Ice Full Fat
- HP Velotechnik Recumbent Trike
- Reactive Adaptations Stinger
- Many Other Options...



Off-Road Handcycles

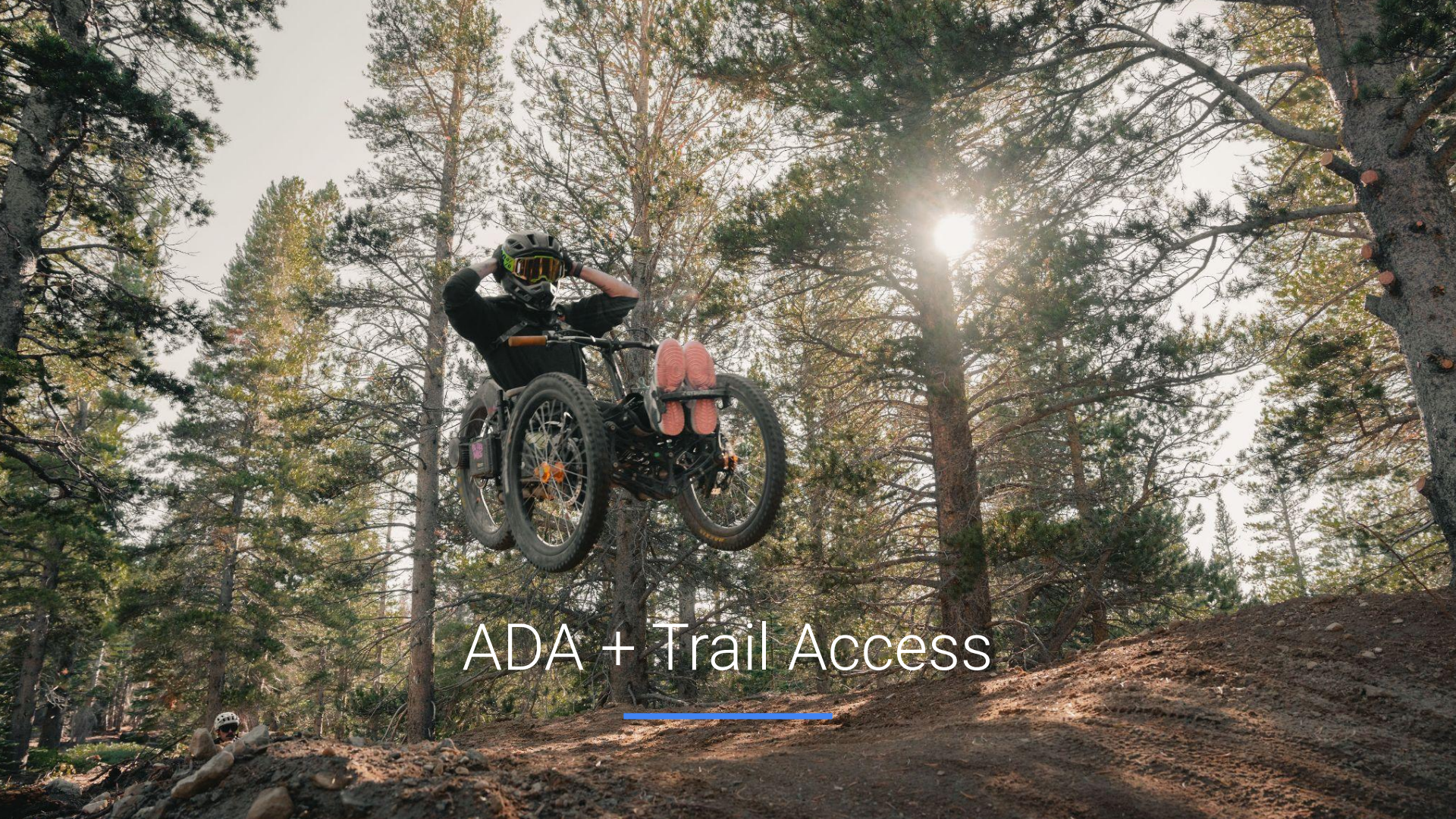
- One-Off Handcycle
- Bomber/Explorer
- JeeTrike/Nuke/Mako
- Lasher/Maddiline
- Many Other Options...



Off-Road Handcycles EXTREME

- Outrider USA
- Bowhead
- Many More Options...





ADA + Trail Access

Trail Access

- Trail Design
- Trail Amenities (e.g. parking, restrooms, gates, etc.)
- Trail Signage and Information
- Trail Rating (Trail Forks)



ADA

- Definition of a Wheelchair...
 - Manual Wheelchair
 - Power Wheelchair/Scooter
 - Off-Road Wheelchair
 - Adaptive Mountain Bikes (AMTB's)
- Models meeting wheelchair definition are their legs for walking AND in non-wilderness areas these same devices are also used as bikes.
- Federally Designated Wilderness per ADA, title V Section 508(c) - "Congress reaffirms that nothing in the Wilderness Act prohibits wheelchair use in a wilderness area by an individual whose disability requires its use.
- Definition: Devices designed solely for the use by a mobility impaired person for locomotion, that is suitable for use in an indoor pedestrian area.



Wheelchair Use in the Wilderness

- Slide 1 of 3

Designed solely for use by a mobility-impaired person for locomotion?

NO

YES

Continue to #2
on next slide



Wheelchair Use in the Wilderness

- Slide 2 of 3

Suitable for use in an indoor pedestrian area?

NO

YES

Continue to #3
on next slide



Wheelchair Use in the Wilderness

- Slide 3 of 3

Is the device battery-powered?

NO

YES

BOTH battery or non-battery powered wheelchairs are allowed anywhere foot travel is allowed in the wilderness.
**Gas-powered is NOT suitable, see Other Power-Driven Mobility Device OPDMD





Funding Sources

Funding Sources

- **Individual...**
 - Ambucs
 - Athletes Helping Athletes
 - Challenged Athletes Foundation
 - High Fives Foundation
 - Kelly Brush Foundation
 - Victoria's Victory Foundation
- **Organization...**
 - Christopher & Dana Reeve Foundation
 - Rotary (or other service clubs)
 - Craig H. Neilsen Foundation
 - VA Adaptive Sports Grant





Program Examples

Parks



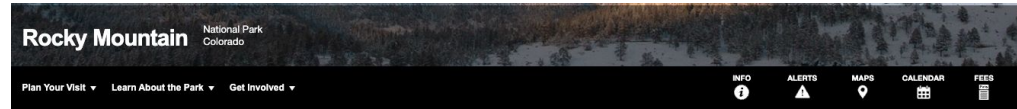
We have a small staff, so we needed something 'plug and play' that wasn't too difficult to use, operate, or assist with."

—Minnesota Historical Society



Federal Lands Partnerships

- National Parks usually collaborate with a local outfitter.
- Satisfies legal and bureaucratic processes.
- Each organization plays to its strengths.
- Example - Rocky Mountain National Park has a GRIT Freedom Chair housed at Estes Park Mountain Shop



[NPS.gov](#) / [Park Home](#) / [Plan Your Visit](#) / [Accessibility](#) / [All-Terrain Wheelchair](#)

Explore Rocky using an All-Terrain Wheelchair



Adaptive Equipment Rental



TOP END EXCELERATOR HANDCYCLE

If you want a great way to exercise, cross-train or just have fun, the Invacare Top End Exceleator handcycle is what you need.

This extremely stable and maneuverable upright three-wheel handcycle is easy to transfer in and out of and lets you tackle hills or level terrain with equal ease. The 7-speed Shimano hub, with reverse braking, means your hands never have to leave the handles. This handcycle is available to rent in Adult and Youth sizes.



TOP END XLT HANDCYCLE

The Invacare Top End XLT Handcycle has been engineered for the total recreational experience. It's available with various speeds. The low seat and recumbent handcycle design enhances aerodynamics and the 15 degrees of camber increases stability. The tall, narrow back offers the maximum range of motion and increased power transfer. This handcycle is available in adult and youth size.



ADAPTIVE GRIPS

Our Community Handcycle Grip Package has been a welcome relief, allowing us to seamlessly customize the ride for the handcyclist. Adaptive grips are provided with the rented handcycle at no additional charge.



HASE TRETTS TRAILER

Kids are naturally active. If they can use this energy to give Dad or Mom some extra propulsion, great! But on Trets, pedaling is only one of many options: The freeWheel mechanism lets the little engine take a break now and then. Even nap time is possible; the seat back can be reclined so far that dozing off is almost irresistible. The Trets Trailer comes pre-hitched to a normal bicycle. Fasten your seat belt and off you go!



HASE KETTWIESEL TRIKE

This sporty, flexible, multi-faceted foot-pedaled trike proves its diversity. Outfitted with adaptive pedals that hold the riders feet in place, this trike is a perfect option for persons of all abilities. A true feast for the eyes on three wheels...



HIPPOCAMPE BEACH WHEELCHAIR

The Hippocampe wheelchair gives access to the beach and all outdoor activities. It can be used on your own or accompanied thanks to the push bar. This wheelchair rolls over sandy beaches and the user can enter the water and bathe on their own. A popular rental item that provides access to the surrounding areas beaches.



SPORTS WHEELCHAIR

Designed with the help of Sunrise Medical's elite wheelchair basketball athletes, the Quickie All Court® wheelchair establishes a new standard in performance and style. This is the perfect wheelchair for both the recreational and the elite athlete.



BOWLING RAMP

This free standing bowling ramp is perfect for participants in wheelchairs, as well as other participants who have low muscle tone, or limited range of motion in their arms. The ramp is lightweight and easy to move, so participants will have no problem moving the ramp to line it up for a strike!



ICE SLEDGES

Sledges are available for use at the City of Reno's outdoor rink for persons with physical disabilities to enjoy the great wintertime experience of ice skating in a seated sled/skate. Regular admission fees apply at the rink but the sledges are available free of charge. Heading to another ice rink, sledges are available to rent to enjoy ice skating at any arena.



ROLLER SLEDGES

Our popular ice sledges can be outfitted with wheels for summer use! Great for use on a gym floor or at your local roller rink.



FREEWHEEL

This durable, lightweight (under 5 lbs) FreeWheel quickly clamps to your existing wheelchair footrest and allows you to push over surfaces that would typically be impossible. With the FreeWheel you are ready to roll in seconds. Strolling, exercising, hiking, or just checking the mailbox, is so much easier with the FreeWheel. Grass, curbs, and rough roads can now be easily navigated.



TREK CRUISELINER TANDEM

Double your fun with Trek's Cruiserliner Tandem! It lets you cruise in style with super-comfortable upright riding positions, wide handlebars, plush cruiser saddles and 7 easy-pedaling gears. Plus, its aluminum frame is light and easy to handle, while the powerful linear-pull brakes offer total control and confidence, too. A great option for participants with visual impairment to enjoy the recreational activity of cycling with family and friends.



TREK PURE ADULT TRIKE

Utilitarianism meets the joy of riding with Trek's Pure Trike. This three-wheeled beauty sports a light and easy-riding aluminum frame, lively aluminum wheels and a nice upright riding position plus a comfortable seat. There's also a large basket on the back with plenty of room to carry groceries, books and anything else you want to take along. You'll also love the excellent stopping power of the Tektro linear-pull brakes, which include a cool parking-brake setting for convenience.



Adaptive Programs

- Adaptive Hiking Program (e.g. Achieve Tahoe)
- Adaptive Clinics
- Adaptive Camps
- Adaptive Competitions (e.g. Northstar Race Series)
- Adaptive Lessons (e.g. Level 1 Adaptive Mountain Bike Instructor Certification)



Let's Talk!

Tish Scolnik

CEO/Founder

GRIT

tish@gogrit.us

April Wolfe, CTRS

Therapeutic Recreation Specialist

City of Reno

wolfea@reno.gov

