



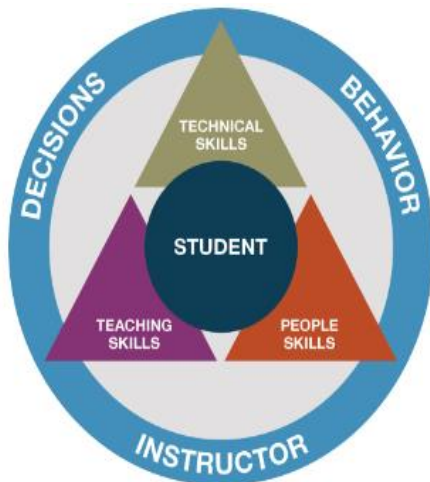
Ski Spectacular Instructor Academy

Hosted by The Hartford Ski Spectacular
December 4-7, 2023

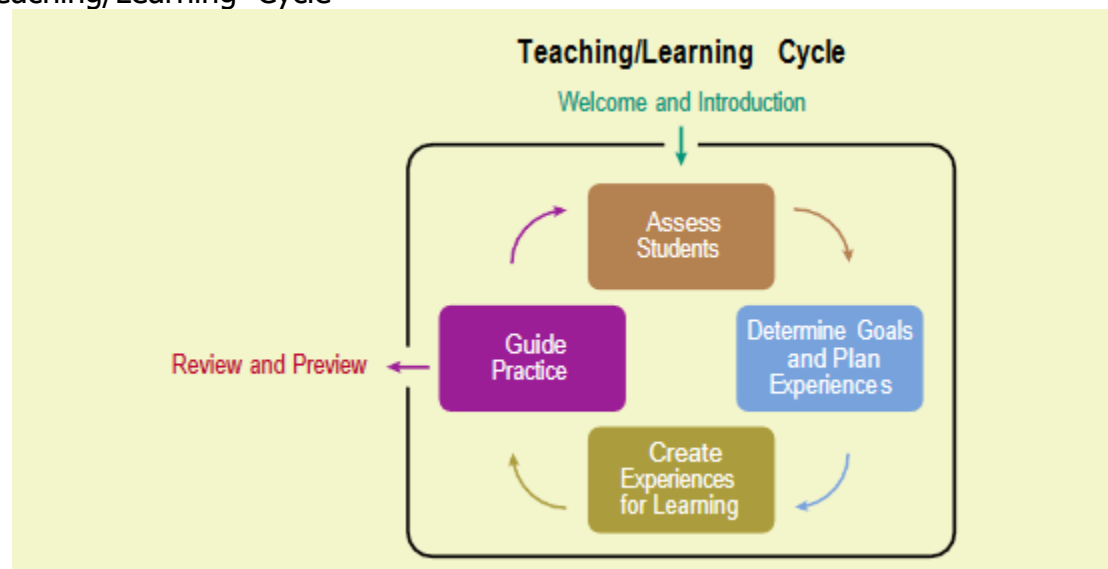
Clinic Summary Notes

Clinic Topic: Teaching is Fundamental – Mary Ellen Whitney

1. Fundamentally understand the Learning Connection Model for creating fun and engaging lessons for all ages.



2. Review the Teaching/Learning Cycle

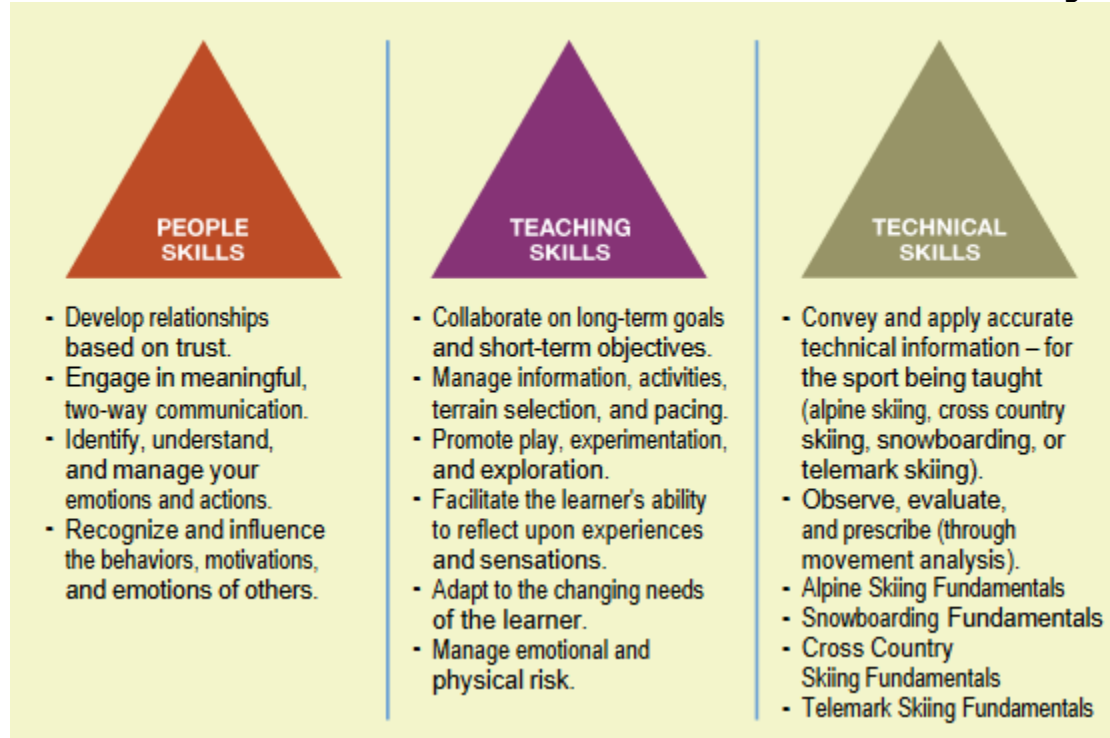


3. The Teaching/Learning Cycle : PSIA-AASI's Teaching/Learning Cycle identifies phases in which the

instructor and students interact to create the learning experience. These phases (which are covered in more detail in the *Teaching Snowsports Manual* are:

- Welcome and Introduction
- Assess Students
- Determine Goals and Plan Experiences
- Create Experiences for Learning
- Guide Practice
- Review and Preview

4. Understand and review the breakdown of skills used to create a learning connection



5. PSIA-AASI's Learning Connection Model: <https://www.youtube.com/watch?v=I5wzITX6W2M>