



Spain Park High School (Tennis)

4700 Jaguar Drive • Birmingham, AL 35242



Medical Center

Grandview Medical Center
3690 Grandview Pkwy
Birmingham, AL 35243



Urgent Care Centers

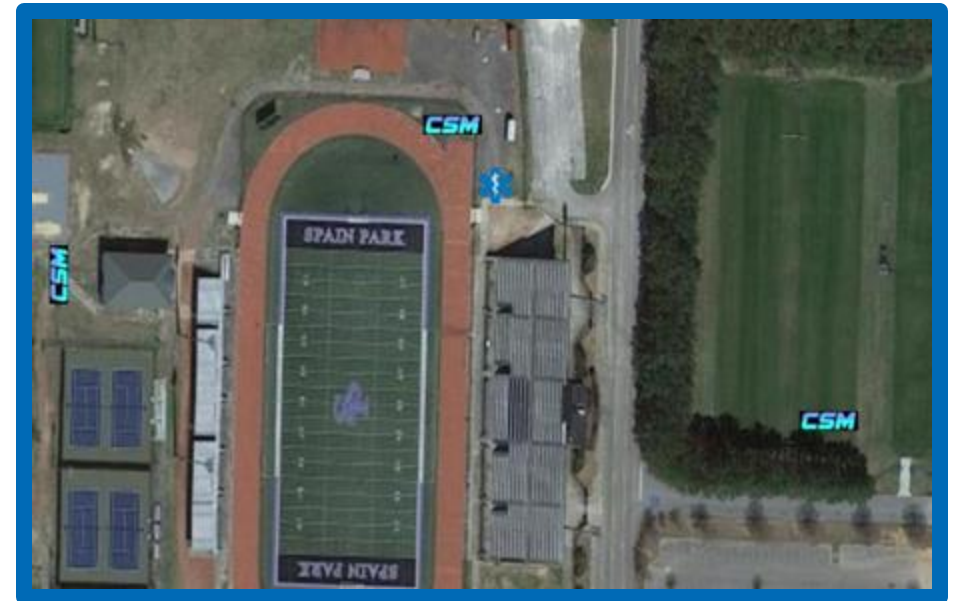
Urgent Care for Children
Highway 280
500 Cahaba Park Cir #100
Birmingham, AL 35242

Birmingham Urgent Care
4600 US 280
Birmingham, AL 35242



Freestanding ED

Medical West
5300 Medford Drive
Hoover, AL 35244



**AEDs will be available onsite at the Athletic Training tent.
In the event of severe weather, participants & spectators
will shelter in vehicles.



Spain Park High School (Track and Field)

4700 Jaguar Drive • Birmingham, AL 35242



Medical Center

Grandview Medical Center
3690 Grandview Pkwy
Birmingham, AL 35243



Urgent Care Centers

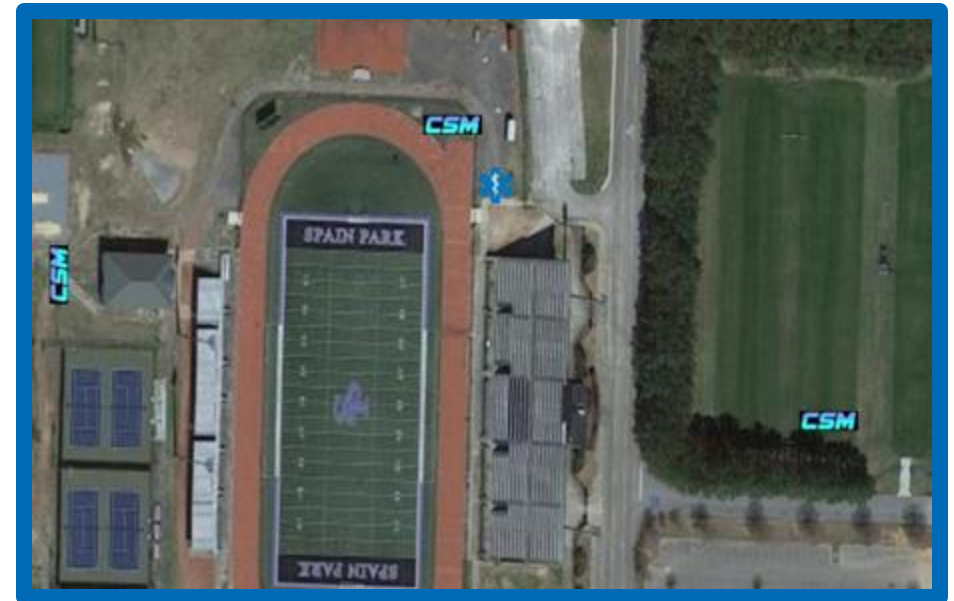
Urgent Care for Children
Highway 280
500 Cahaba Park Cir #100
Birmingham, AL 35242

Birmingham Urgent Care
4600 US 280
Birmingham, AL 35242



Freestanding ED

Medical West
5300 Medford Drive
Hoover, AL 35244



**AEDs will be available onsite at the Athletic Training tent.
In the event of severe weather, participants & spectators
will shelter in vehicles.



Oak Mountain (Paratriathlon)

200 Terrace Drive • Pelham, AL 35124



Medical Centers

Grandview Medical Center
3690 Grandview Pkwy
Birmingham, AL 35243

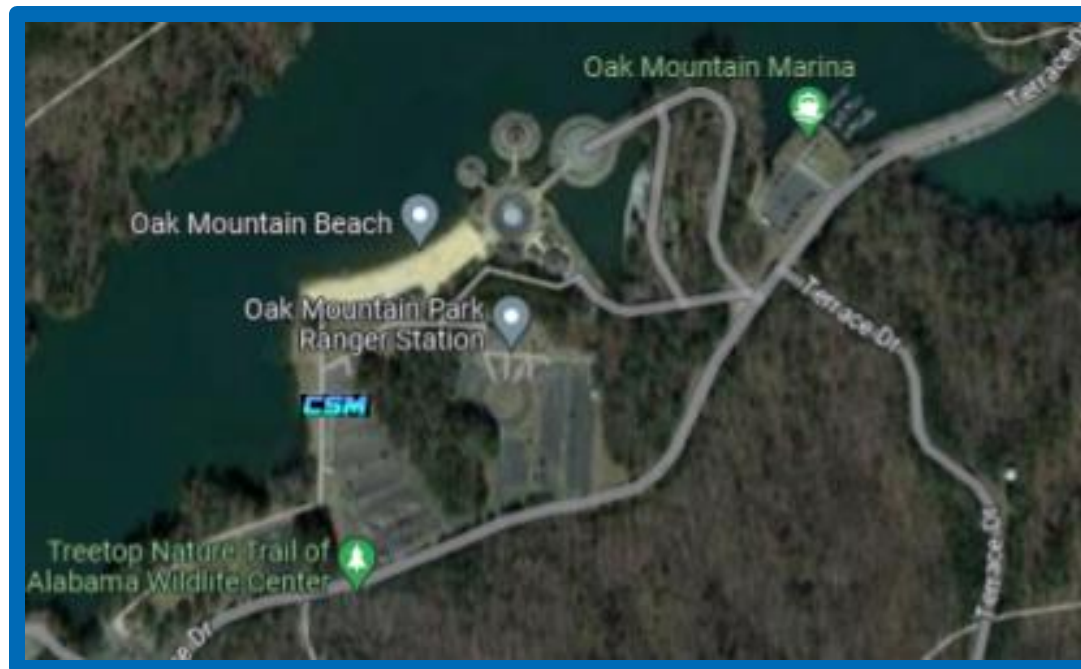
**Shelby Baptist
Medical Center**
1000 1st St N
Alabaster, AL 35007



Urgent Care Centers

American Family Care
2970 Pelham Pkwy
Pelham, AL 35124

**Physicians Care
Walk-in Clinic**
1989 Montgomery Hwy
Hoover, AL 35244



*AED will be supplied by ATC on site.

In the event of severe weather, participants and spectators will shelter in place.



Lakeshore Foundation (Powerlifting)

4000 Ridgeway Drive • Birmingham, AL 35209



Medical Centers

Grandview Medical Center

3690 Grandview Pkwy
Birmingham, AL 35243

Children's of Alabama

1600 7th Ave South
Birmingham, AL 35233

Brookwood Baptist Medical Center

2010 Brookwood Medical Center
Birmingham, AL 35209



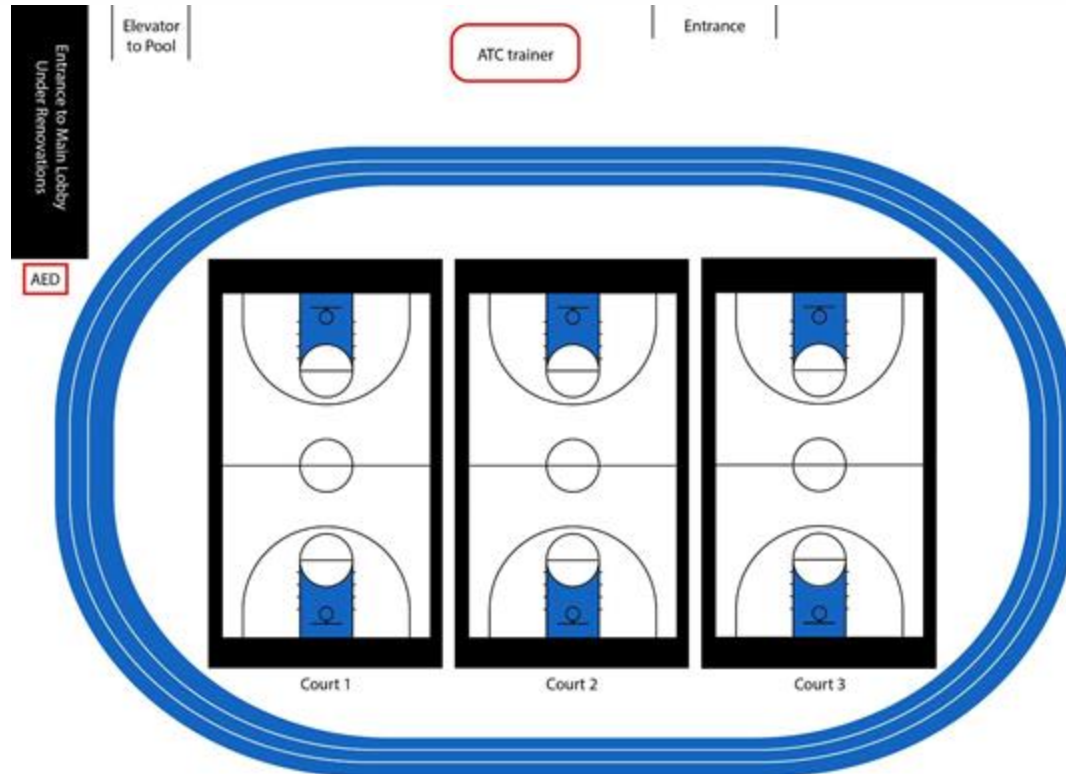
Urgent Care Centers

TrustCare

708 Montgomery Hwy #101
Vestavia Hills, AL 35216

Your Kid's Urgent Care

790 Montgomery Hwy #112
Vestavia Hills, AL 35216





Birmingham Crossplex Natatorium (Swimming)

2340 CrossPlex Blvd • Birmingham, AL 35208



Medical Centers

Grandview Medical Center
3690 Grandview Pkwy
Birmingham, AL 35243

Children's of Alabama
1600 7th Ave South
Birmingham, AL 35233

UAB Hospital
1802 6th Ave S
Birmingham, AL 35233



Urgent Care

**UAB Medicine
Urgent Care**
125 20th St South
Birmingham, AL 35233



**AED will be on the wall alongside the Natatorium entrance on the lower level.

In the event of severe weather, participants and spectators will shelter in place in locker rooms and bathrooms.



Hoover Met Stadium (Welcome Ceremony)

5500 Stadium Trace Pkwy • Hoover, AL 35244



Medical Center

Grandview Medical Center
3690 Grandview Pkwy
Birmingham, AL 35243



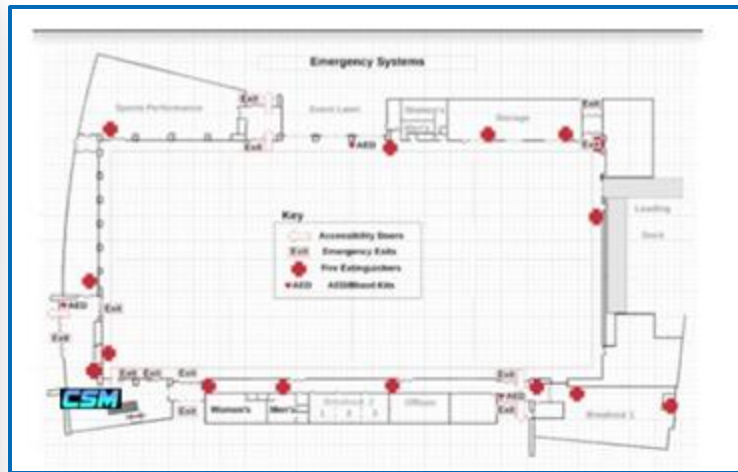
Freestanding ED

Medical West
5300 Medford Dr
Hoover, AL 35244



Urgent Care For Children

1001 Brocks Gap Pkwy
Suite 115
Hoover, AL 35244



Athletic Trainers will be available during the Welcome Ceremony Social 3:00 pm-4:30 pm in the Finley Center vestibule and at the Welcome Ceremony in the stadium by the tunnel entrance 5:00pm-7:30pm.

Hoover Finley Center (Shooting)

5508 Stadium Trace Pkwy • Hoover, AL 35244



Medical Center

Grandview Medical Center
3690 Grandview Pkwy
Birmingham, AL 35243



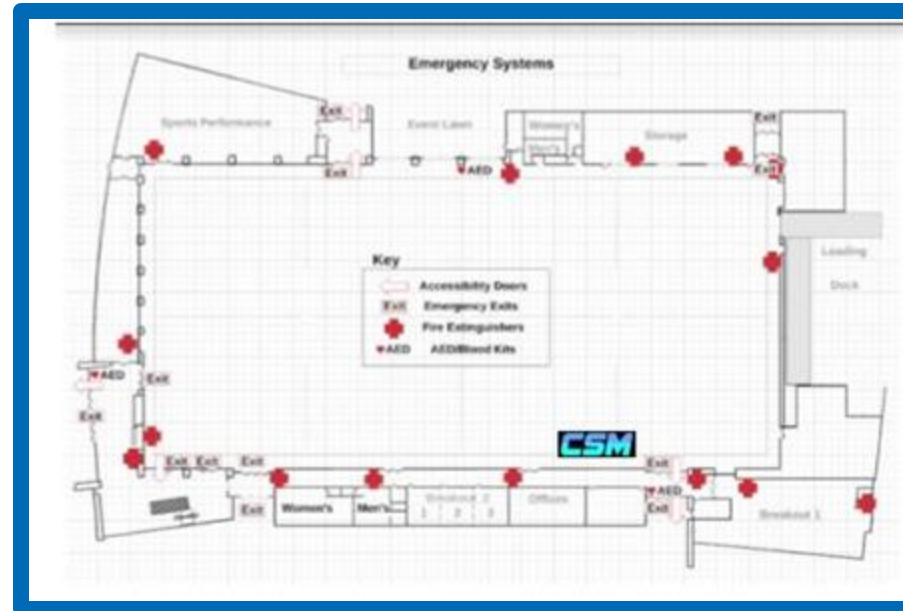
Freestanding ED

Medical West
5300 Medford Dr
Hoover, AL 35244



Urgent Care For Children

1001 Brocks Gap Pkwy
Suite 115
Hoover, AL 35244



**AEDs and Stop the Bleed kits will be on the wall by the event lawn exit.

In the event of severe weather, participants and spectators will shelter in place in locker rooms and bathrooms.





Hoover Met Stadium (Archery)

5500 Stadium Trace Pkwy • Hoover, AL 35244



Medical Center

Grandview Medical Center
3690 Grandview Pkwy
Birmingham, AL 35243



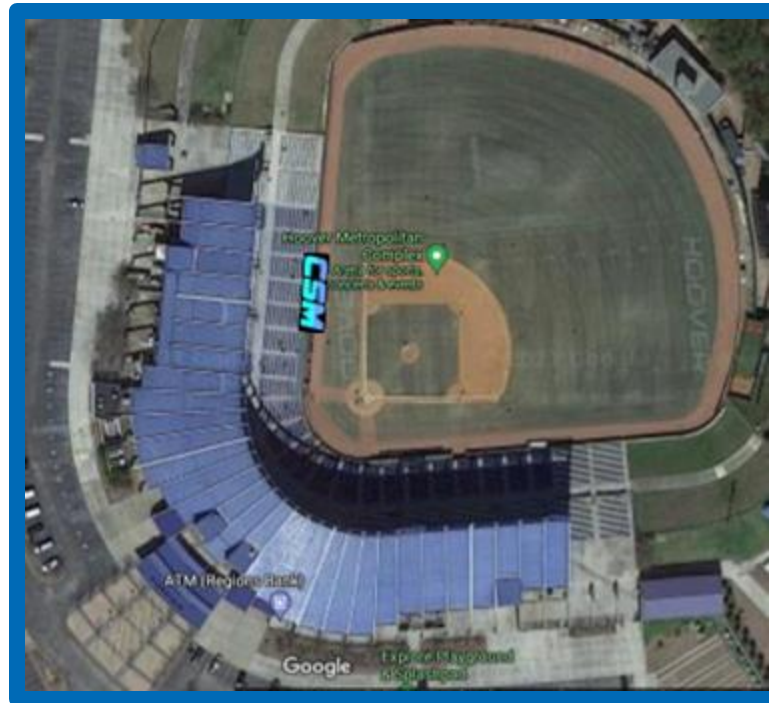
Freestanding ED

Medical West
5300 Medford Dr
Hoover, AL 35244



Urgent Care For Children

1001 Brocks Gap Pkwy
Suite 115
Hoover, AL 35244



The lower-level AED and Stop the Bleed kit are located in the tunnel behind the home plate by the elevator.

The Upper-level AEDs are located at the main entrance and at the top of the stairs for the suite level.

In the event of severe weather, participants and spectators will shelter in their vehicles.