



**MOVE
UNITED**



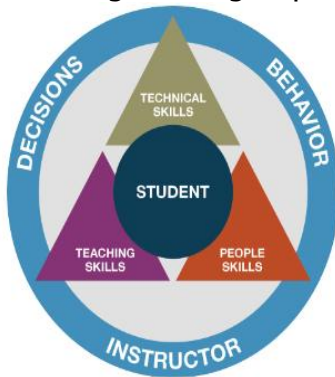
Ski Spectacular Instructor Academy

Hosted by The Hartford Ski Spectacular
December 9-11, 2024

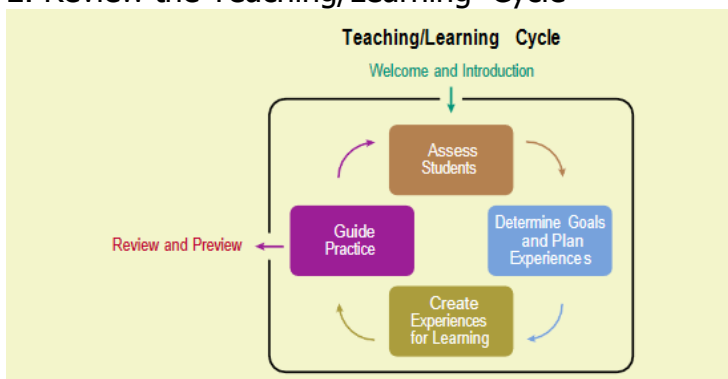
Clinic Summary Notes

Clinic Topic: Lead Effective & Stress-free Adaptive Class Lessons for Guests with Neurodevelopmental Diagnoses – Mary Ellen Whitney

1. Review the Assessment and evaluation process for each student to set the group size and skill level parameters.
2. Fundamentally understand the Learning Connection Model for creating fun and engaging class lessons for all ages and group sizes.



2. Review the Teaching/Learning Cycle

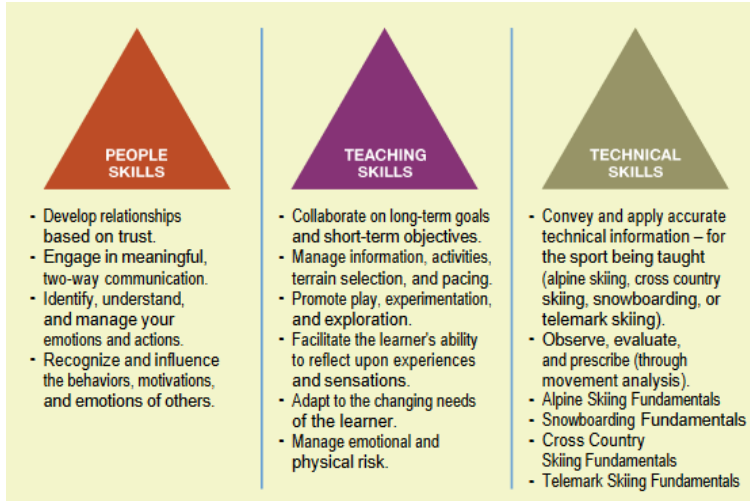


3. The Teaching/Learning Cycle : PSIA-AASI's Teaching/Learning Cycle identifies phases in which the instructor and students interact to create the learning experience. These phases (which are covered in more detail in the **Teaching Snowsports Manual**) are:

- Welcome and Introduction
- Assess Students
- Determine Goals and Plan Experiences
- Create Experiences for Learning

- Guide Practice
- Review and Preview

4. Understand and review the breakdown of skills used to create a learning connection



5. Apply your skills in adaptive to include pre- evaluation of students for group selection; assessing the group dynamics throughout the lesson; adjusting the lesson plan to be inclusive of all skill levels; utilizing the lead and secondary coaches to keep engagement for all students.

Resources:

PSIA-AASI's Learning Connection Model : <https://www.youtube.com/watch?v=I5wzITX6W2M>

- Online Free Resources: [Adaptive Alpine Technical Manual](#)
- [Adaptive Instruction Supplement: Diagnoses & Medication Classifications](#)
- [FREE! – AASI Adaptive Snowboard Guide](#)
- [FREE! – Adaptive Snowsports Instruction](#)
- [FREE! – Fundamental Mechanics of Alpine Skiing Across Adaptive Disciplines](#)