

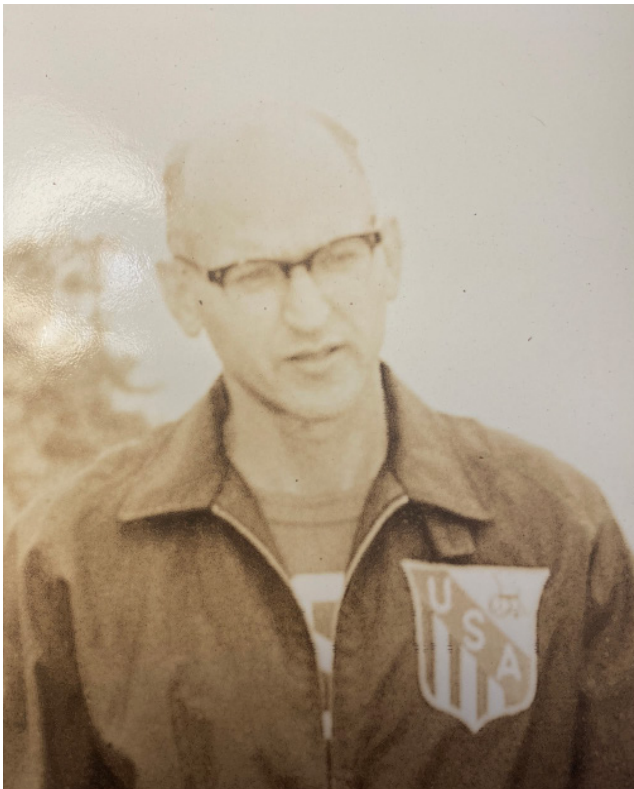


Hall of Fame

Seymour “Sy” Bloom

Montpelier, Vermont

Inducted in 1971



Seymour “Sy” Bloom became involved with wheelchair sports in the mid-fifties. He coached wheelchair basketball at the Bulova School of Watchmaking from 1955 to 1983. Through the years, Sy was instrumental in introducing, training and coaching wheelchair sports for countless athletes, some of whom would become legends. He coached the Bulova Teams in regional meets and the National Wheelchair Games (NWG) from their inception.

Sy was head coach of the U.S. Wheelchair Team from 1964 to 1980, including five Paralympics and five Pan Am Games. He was a charter member of the National Wheelchair Athletic Committee (later NWAA/WSUSA/WASUSA/Adaptive Sports USA) when it was formed in 1956, serving until 1983. Sy was instrumental in formulating the

organization’s Bylaws and Constitution. During the early years he trained officials and coaches and was an advisor to organizers. From 1975 to 1995 he served on the Pan American Wheelchair and International Stoke Mandeville Federation Technical committees. He was inducted into the National Wheelchair Basketball Association Hall of Fame in 1986 for his work and contributions in developing that organization.