

# Disability Inclusion: Catalyzing Change Through Sport

May 5 - 7, 2025  
Park City, Utah



Hosted By





**Unlock the Leadership Potential Within Your Team**

**ACTIVATE UNDERSTANDING AND TRUST**

# LAURA BARNARD

SPEAKER | AUTHOR | FOUNDER

*Transforming the Leadership  
Development Landscape*





“Real coaches **acknowledge the MVP in everybody.**”

–Dawn Staley

**BREAKTHRU has partnered with  
top academic institutions and organizations to  
cultivate leadership among teams.**



One of your many roles is to be a Leadership Architect.

*You have the opportunity to create an environment  
where leadership can develop and thrive.*

How can you  
cultivate **leadership**,  
enhance **synergy**, and  
improve the **performance** of your team?

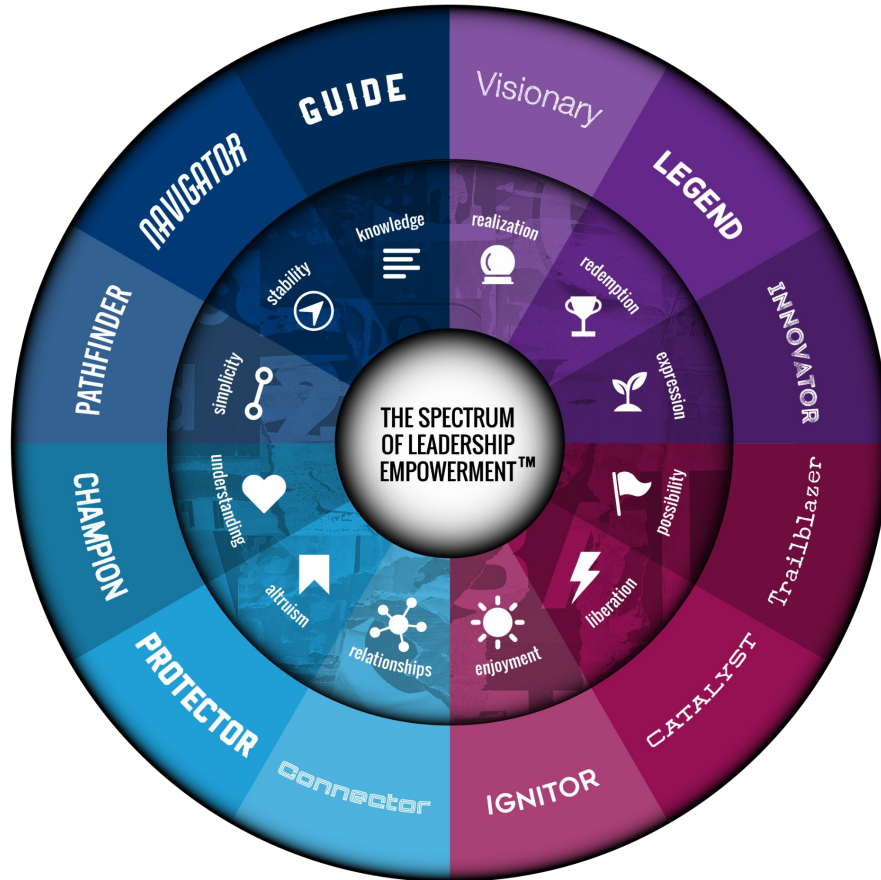
By accelerating  
understanding and trust.

When person feels **understood** by their leader, they are 3.5 X more likely to be engaged and perform at a high level.

—Harvard Business Review

# Identity-based Trust vs. Transactional Trust

How can you encourage **vulnerability**,  
gain deeper **insights** into,  
and cultivate more meaningful **connections**  
amongst your Team?

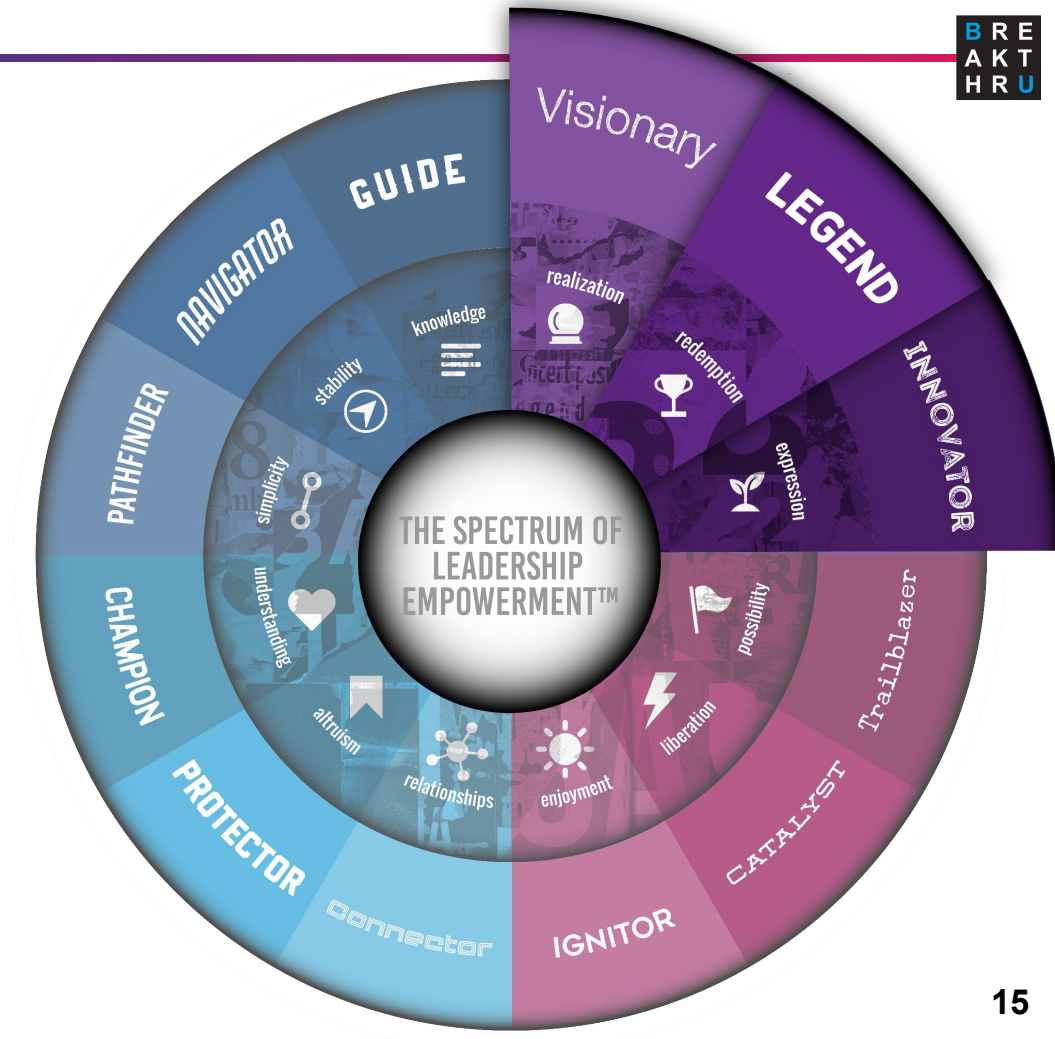


# Introducing the Spectrum of Leadership Empowerment™

Designed to help teams *access* and *activate* the power of their individual and collective leadership.

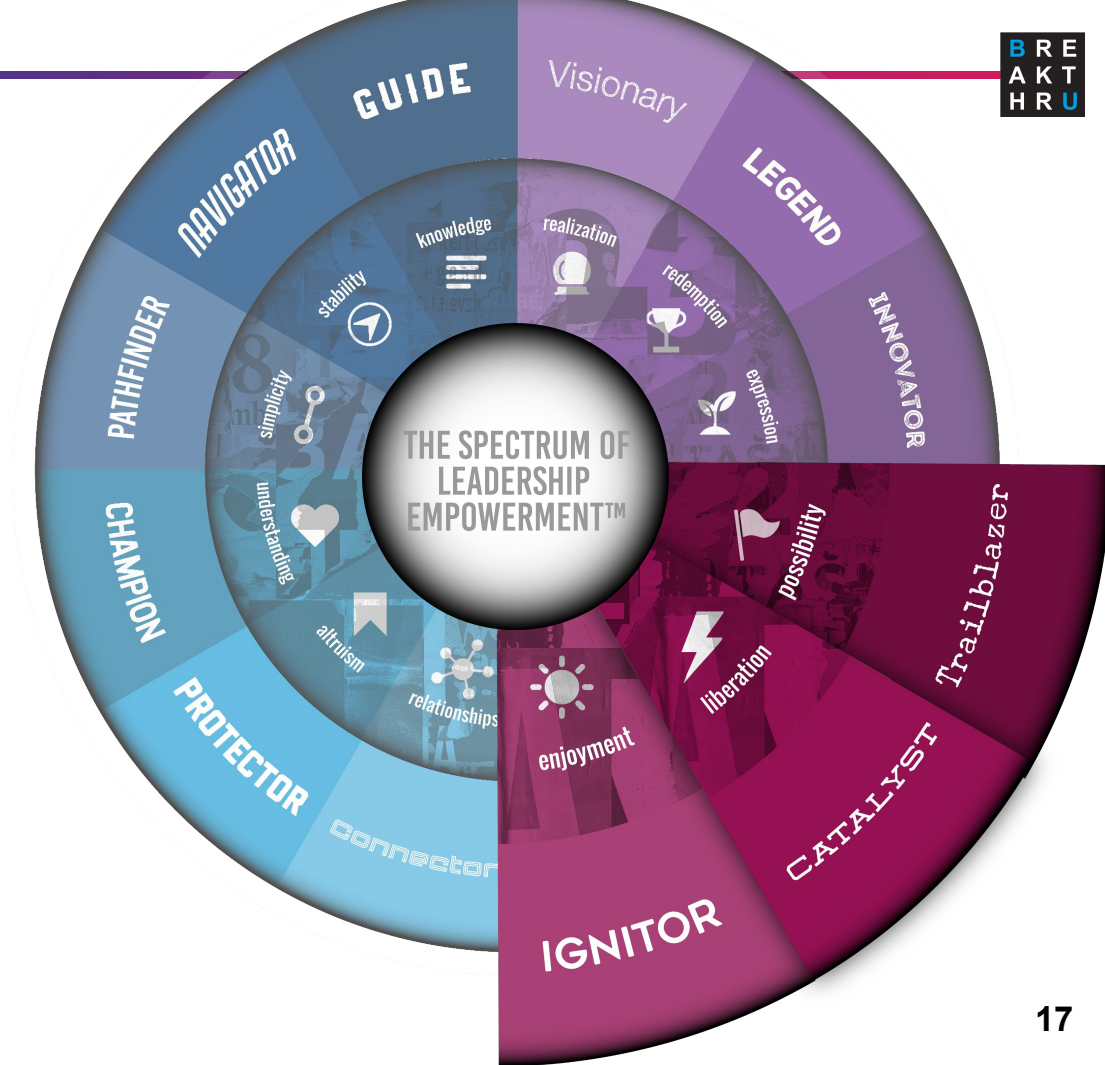
# To Create

# Leaders with the Power to Create



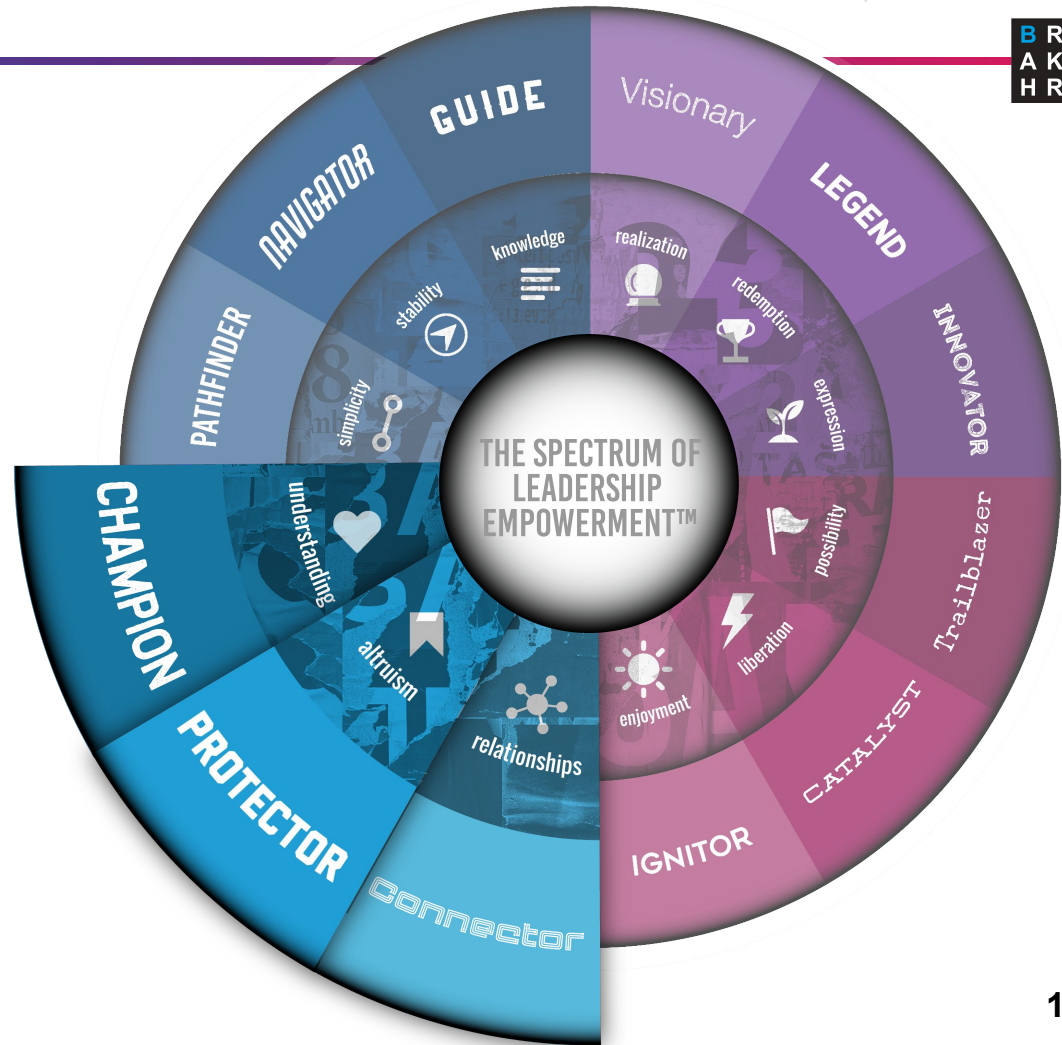
# To Awaken

# Leaders with the Power to Awaken



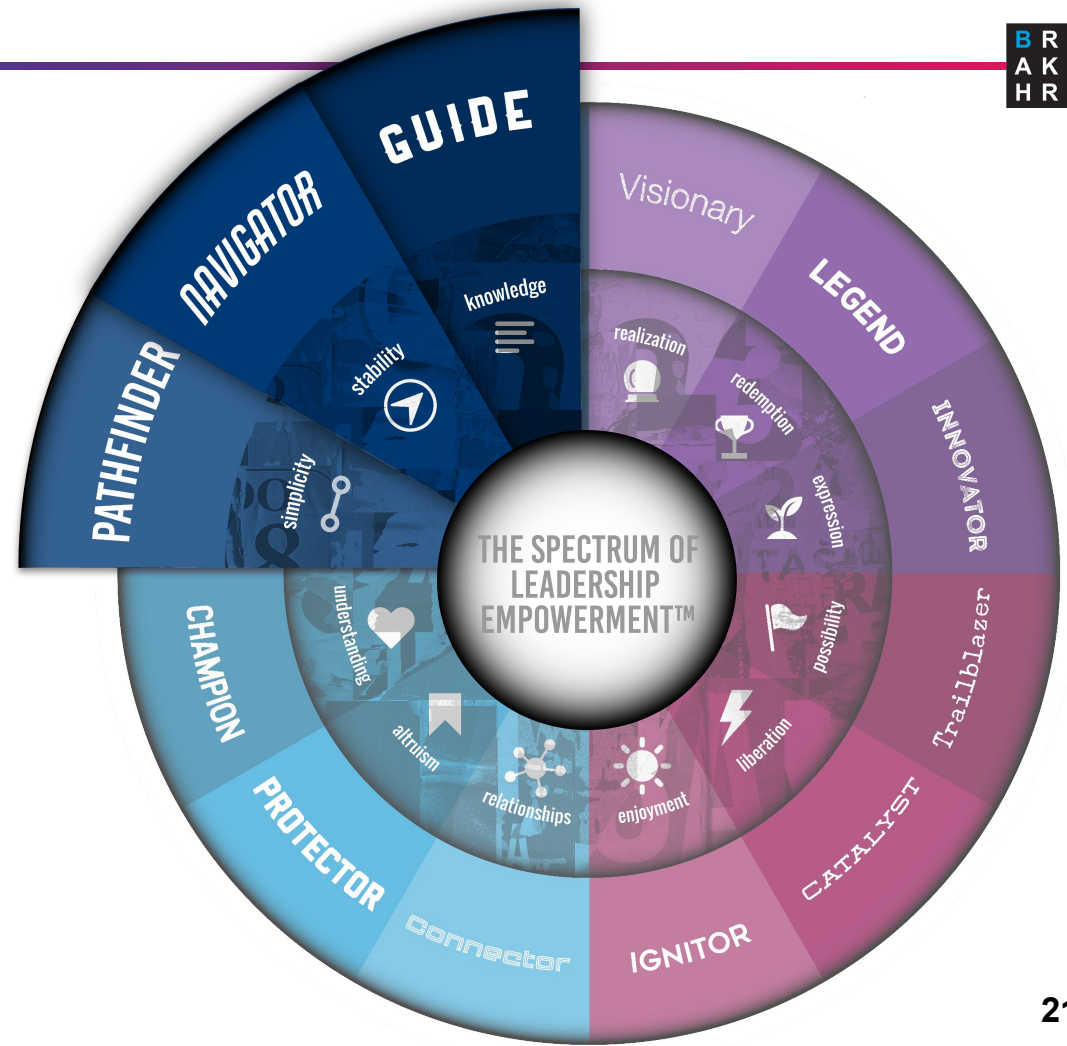
# To Unite

# Leaders with the Power to Unite

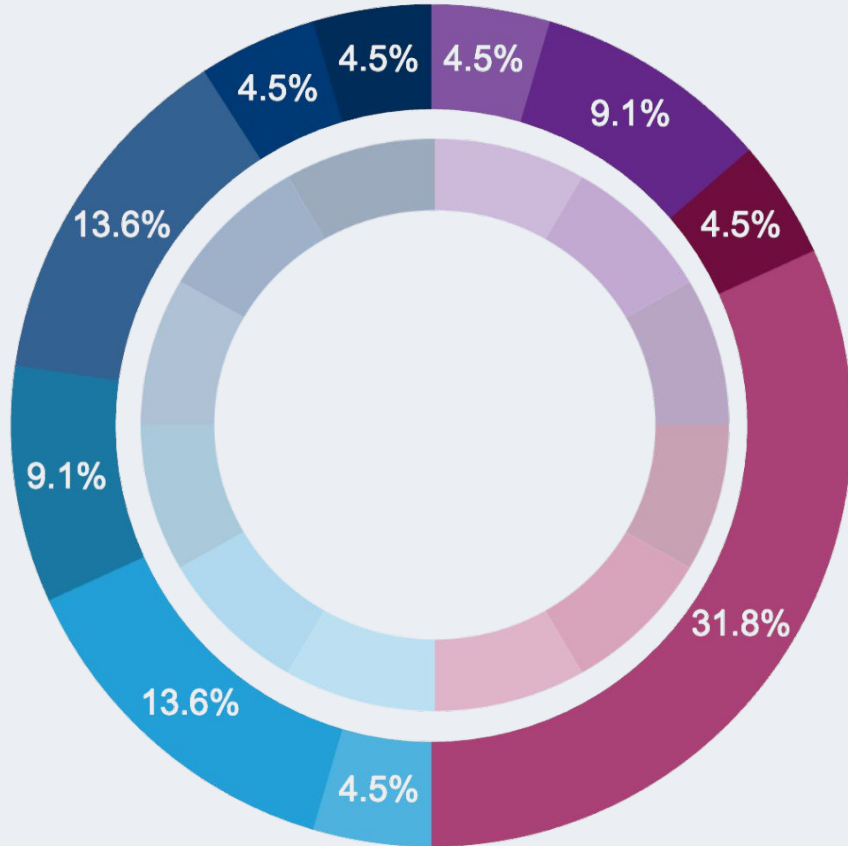


# To Structure

# Leaders with the Power to Structure



What are you committed  
to doing to  
**cultivate** leadership  
amongst your Team?



**What would knowing the Leadership Types of all your Team Members enable you to do or achieve?**

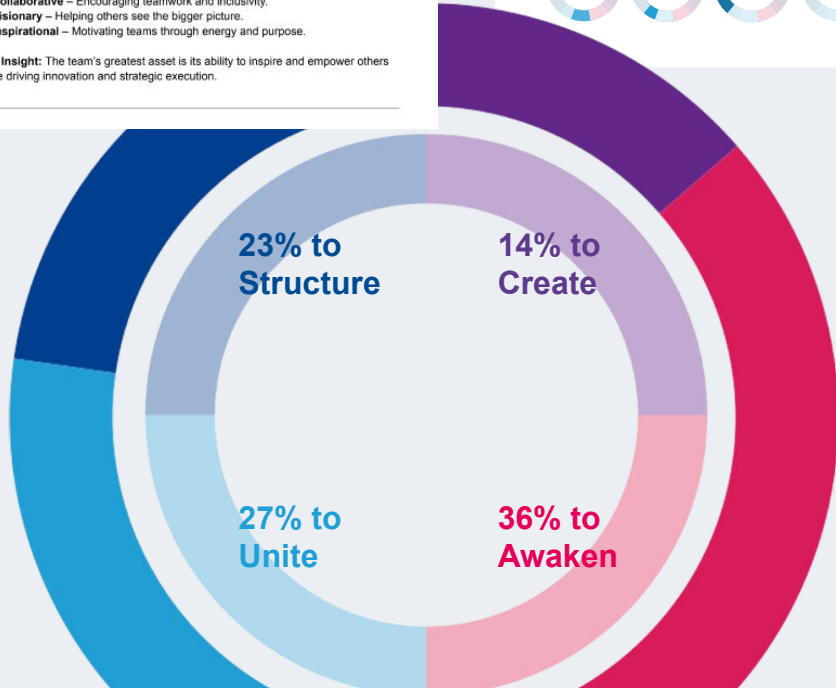
## Team Strengths

A team's collective strengths define how it operates at its best. Shared qualities drive synergy and success. Leveraging these natural strengths enhances overall effectiveness, builds trust, and maximizes strategic influence within the organization.

### What the team recognizes about itself at its best

- ✓ **Strategic** – Thinking ahead and anticipating industry trends.
- ✓ **Innovative** – Constantly seeking new ideas and problem-solving approaches.
- ✓ **Empowering** – Creating environments where teams can thrive.
- ✓ **Resilient** – Adaptable and persistent in the face of challenges.
- ✓ **Trust-Driven** – Building deep, authentic relationships.
- ✓ **Collaborative** – Encouraging teamwork and inclusivity.
- ✓ **Visionary** – Helping others see the bigger picture.
- ✓ **Inspirational** – Motivating teams through energy and purpose.

**Key Insight:** The team's greatest asset is its ability to inspire and empower others while driving innovation and strategic execution.



# How would you build team culture using these insights?

# Leadership Types can serve as a...



mirror

window

compass

lens

blueprint

beacon

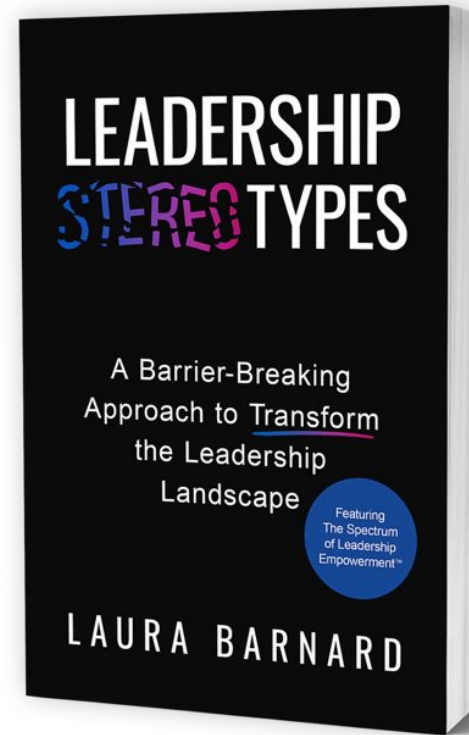
gps

filter



We want to help you  
access and activate  
the full leadership potential  
on your team.

**Buy** the *LEADERSHIP TYPES* book  
today or at [www.leadershiptypes.com](http://www.leadershiptypes.com)



Scan here to access the **Leadership Types Discovery Tool** or visit

[breakthrubrands.com/leadership-types/quiz/](https://breakthrubrands.com/leadership-types/quiz/)

Click “DISCOVER MY LEADERSHIP TYPE”.

Enter the free code **MOVEUNITED** (code valid for 24-hours only)



Complete the **Leadership Types Discovery Tool**.

Your report will be emailed to the address you provide (Gmail or personal email tends to work best due to spam filters).

Search for “Leadership Types” in your inbox and click download the pdf of your report.





# Q&A



# Thank You & Let's Connect!

✉ [laura@letsbreakthru.com](mailto:laura@letsbreakthru.com)

🌐 [letsbreakthru.com](https://letsbreakthru.com)



LinkedIn