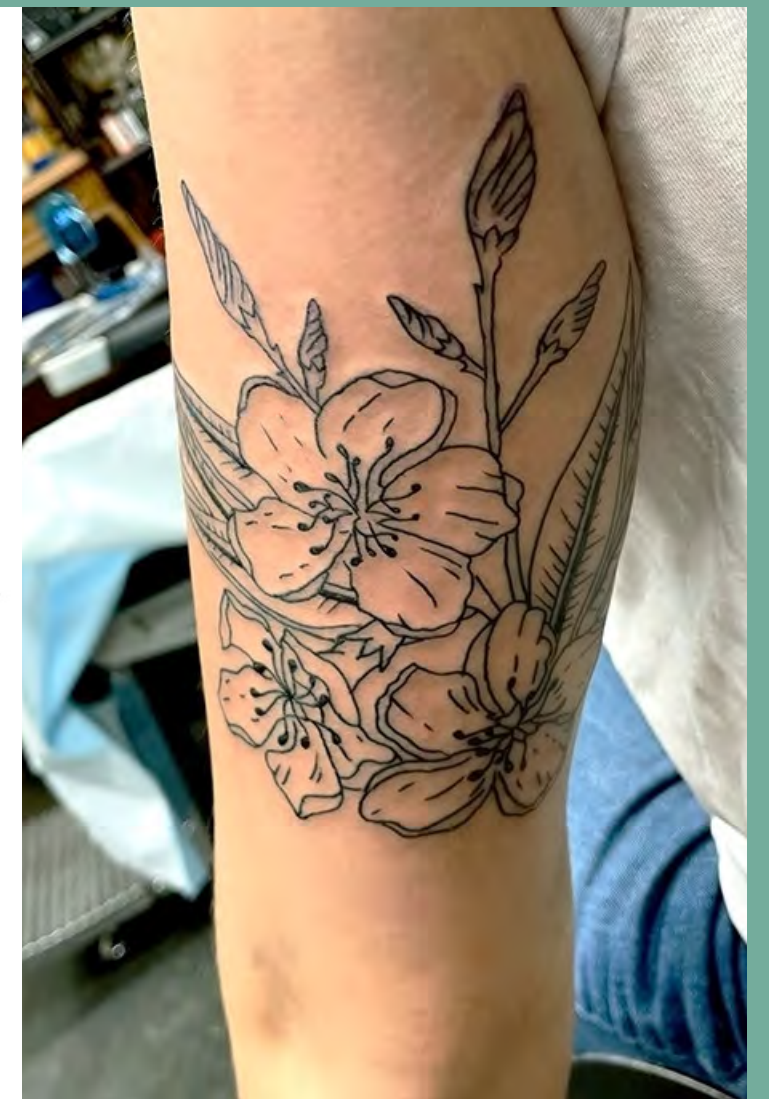
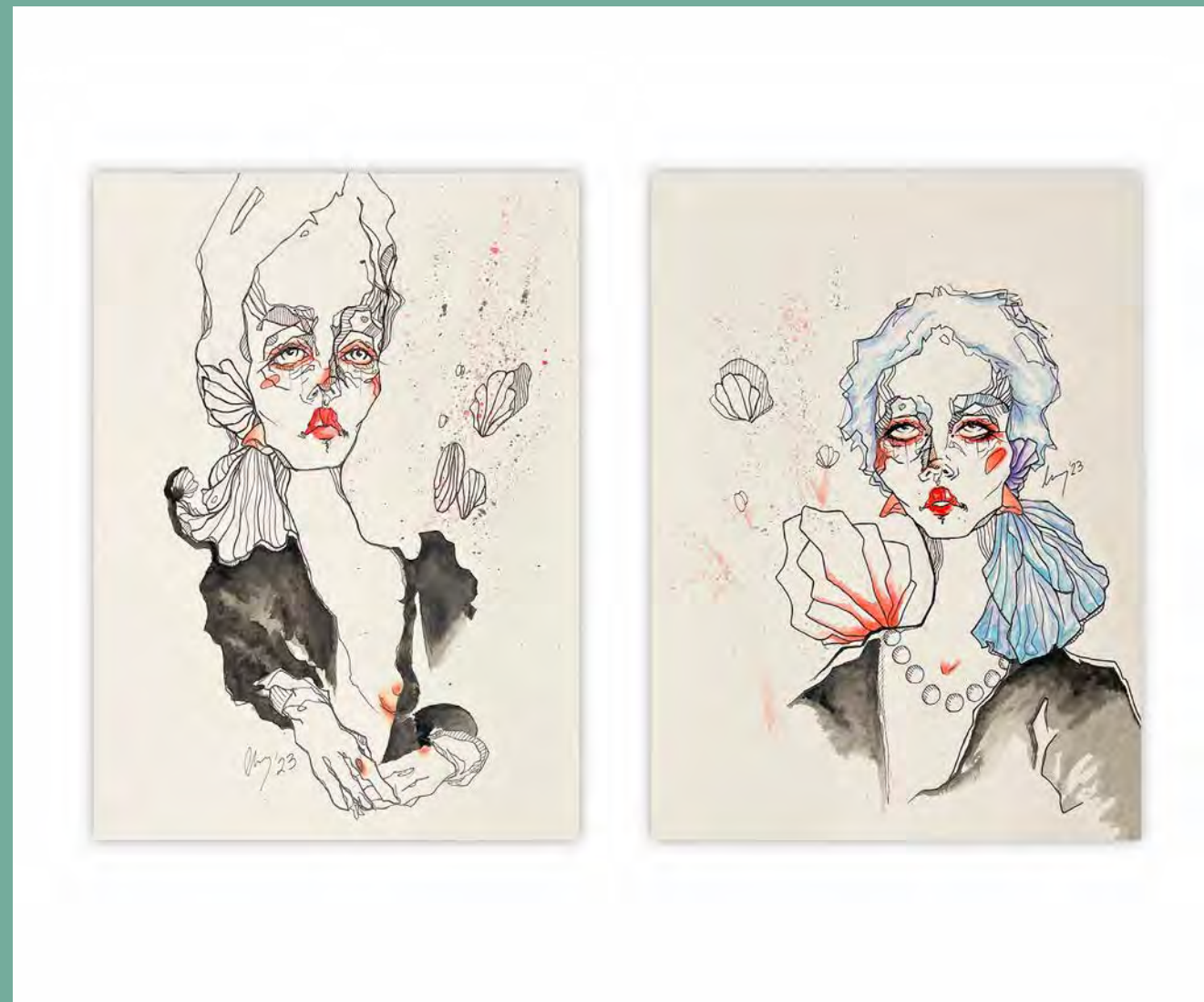


BEYOND THE PODIUM:
***THE LEGACY OF DISABILITY
SPORTS LEADERS***

CLOSING KEYNOTE | **ALI IBAÑEZ**



















A photograph of three female wheelchair basketball players in a gymnasium. They are wearing dark jerseys with the number '12' and '13' visible. One player in the center is smiling broadly and holding hands with the others. The background shows a crowd of spectators in bleachers.

KEY POINTS

- **The importance and impact of mentorship**
- **How mentorship contributes towards the development of athlete voices**
- **Athlete impact in building sustainable development pipelines for future generations**



Who has greatly impacted your life?



The background image is a composite of two photographs. The left side shows a man in a wheelchair with the number '12' on his back, being assisted by a man standing next to him. The right side shows a woman in a wheelchair talking to another woman who is also in a wheelchair. The entire image has a teal overlay.

VARYING IMPACTS OF MENTORSHIP:

- Mentorship in early development
- Facilitated peer mentorship
- Mentorship built on authentic relationships







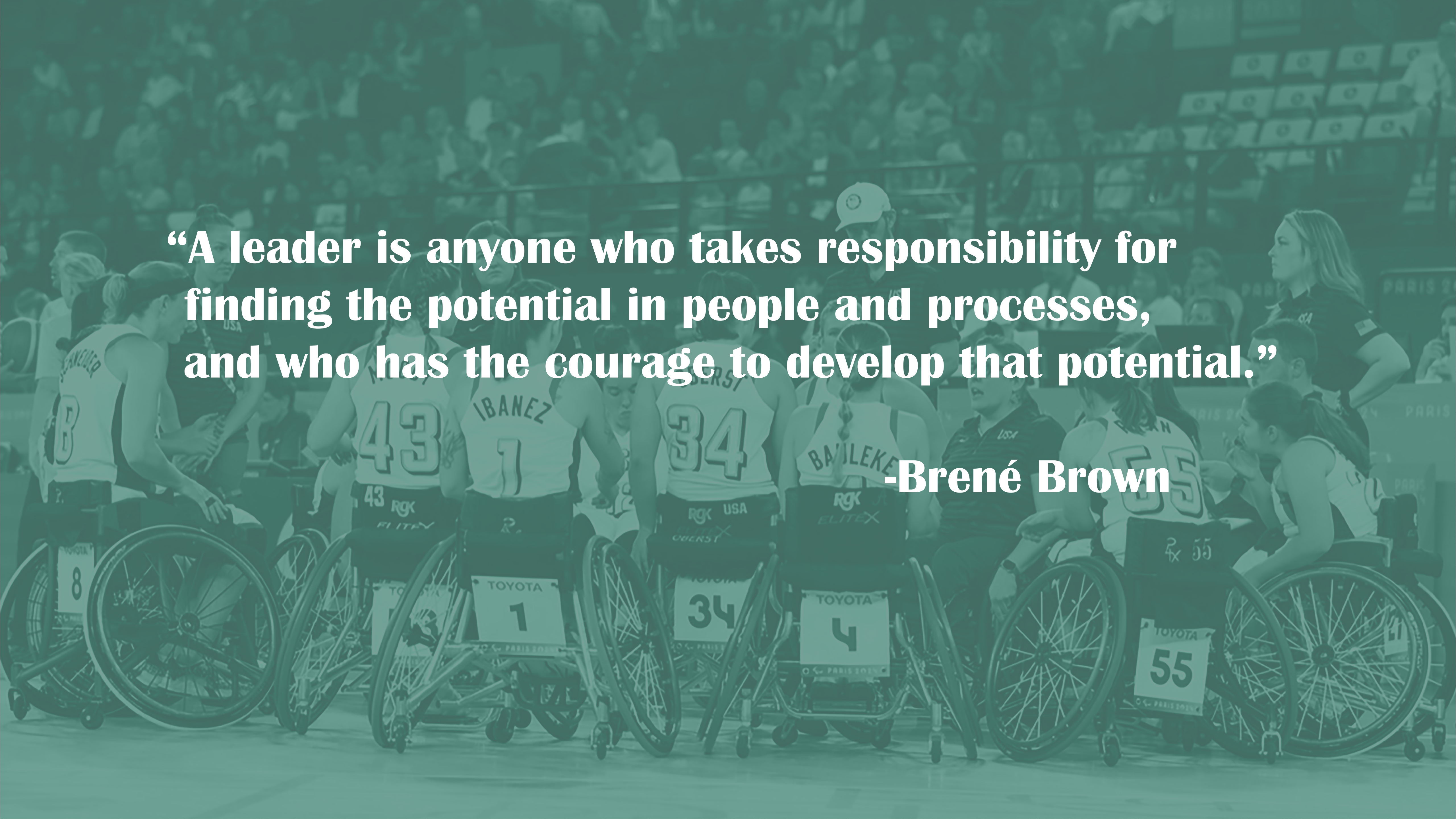


A woman with long blonde hair, wearing glasses and a black face mask, is seated in a wheelchair. She is reaching out with her right hand to shake the hand of a young woman. The young woman is also wearing a black face mask and a black athletic jersey with "ILLINOIS" and the number "17" visible. They are outdoors on a paved surface, possibly a track or field. In the background, another person in a black jersey with the number "40" is visible. The entire image has a teal overlay.

Impact within great mentorship is derived not only from what is taught but *how* it is taught.





A group of female wheelchair athletes are lined up in their racing chairs, ready for a start. They are wearing white singlets with their names and bib numbers. The bib numbers visible are 8, 43, 1, 34, 4, and 55. The singlets also feature logos for 'USA', 'RCK', 'ELITE X', and 'TOYOTA'. The background shows a large crowd of spectators in a stadium setting. The entire image has a teal overlay.

“A leader is anyone who takes responsibility for finding the potential in people and processes, and who has the courage to develop that potential.”

-Brené Brown



TRANSPARENCY
ACCURACY
VISIBILITY



A group of female wheelchair athletes are huddled together on a grassy field, smiling and looking towards the camera. They are wearing athletic gear, including tank tops and headbands. The image is overlaid with a semi-transparent teal filter. The text "What goes into the development of sustainable systems and programs?" is centered over the image in a white, bold, sans-serif font.

What goes into the development of sustainable systems and programs?



SUSTAINABILITY IN SPORT

- **Cyclical Nature**
- **Mentorship/Leadership**
- **Equity in opportunities, representation, exposure**
- **Accessibility of educational resources**
- **Community/alumni engagement and ownership**





TAKE ADVANTAGE OF YOUR POTENTIAL FOR IMPACT.